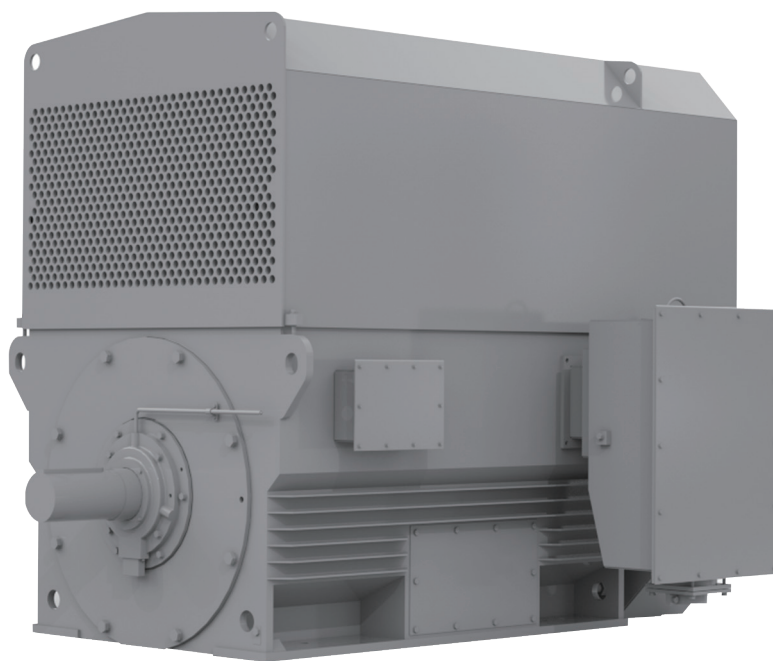


1MC0 高压高效三相异步电动机

中型电机产品样本（中心高 355~710）
2020.03

武汉尚德信自动化科技有限公司
网址：<http://www.sdxion.com>
邮箱：sdxion@126.com
电话：027-87341909/87341996



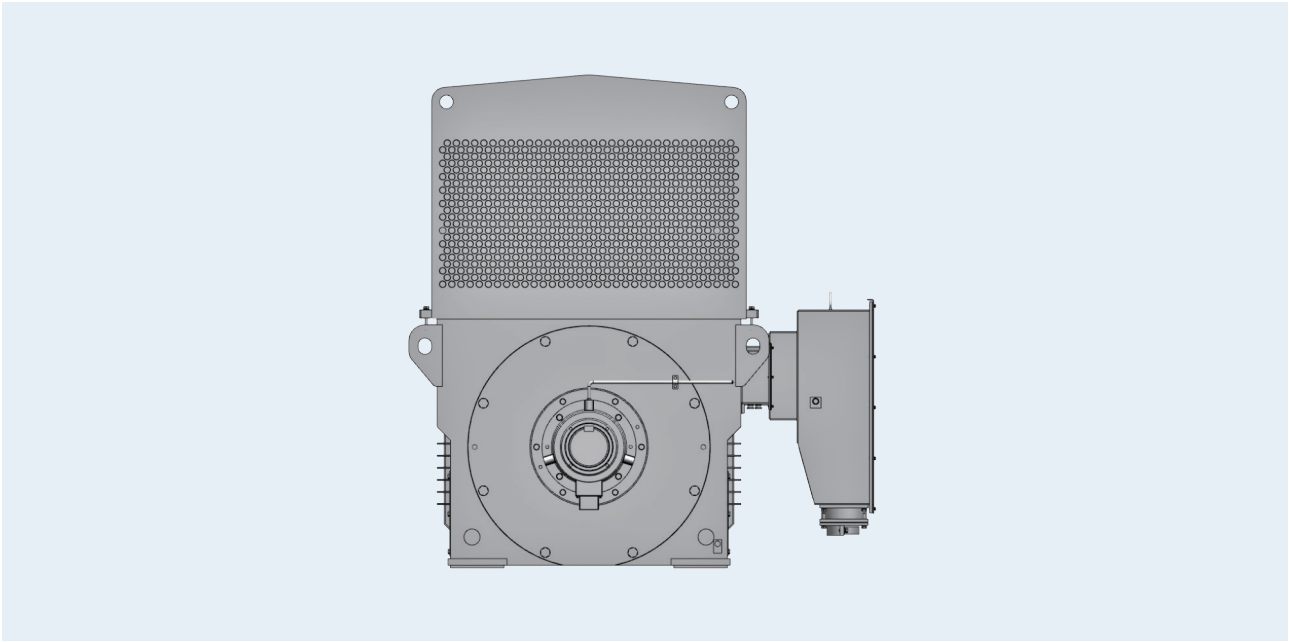
目 录 Content

1MC0 高压高效三相异步电动机 (10kV IC611)

1MC0 High Voltage High Efficiency Three Phase Asynchronous Motor (10KV IC611)

概述 Overview	3
产品基本信息 Product Basic Information	4
订货号描述 Order Number Description	5
技术特点 Technical Features	6
• 技术特点和优势 Technical features and customer benefits	6
• 标准和容差 Standards and tolerances	7
• 绝缘系统 Insulation system MICALASTIC®	9
• 轴承配置 Bearing Assignment	9
• 接线盒位置及进线规格 Terminal box position and connection data	10
• 电机选型 Motor Selection	11
选件及说明 Options and Descriptions	12
电机默认配置表 Default Configuration	14
选型技术数据表 Technical Data (IMB3 IC611 10kV)	15
外形及安装尺寸图 Outline and Installation Dimensions (IMB3 IC611 10kV)	18
电机询价数据表 Motor Inquiry Data Sheet	19

概述 Overview



IMC0 系列高压高效三相异步电动机是西门子（中国）有限公司的新型模块化，兼顾通用化及特殊需求的高压电动机产品，其效率达到中国能效二级（GB30254-2013）或节能惠民工程高压高效电机补贴标准，具有品质卓越、运行可靠、结构紧凑等特点，是风机、泵、压缩机、卷扬机、离心机、破碎机及橡塑机械等各种机械设备的理想驱动电机。

IMC0 high voltage high efficiency three phase asynchronous motor is a new modular design for both general applications and special requirements owned by Siemens Ltd., China. The motor complies with efficiency grade 2 (GB30254-2013) or high efficiency level of government subsidy program. At the same time, it boasts compact structure, high quality and high reliability. IMC0 is an ideal drive source for mechanical machineries such as fan, pump, compressor, winch, centrifugal, crusher and rubber & plastics.

产品基本信息 Product Basic Information

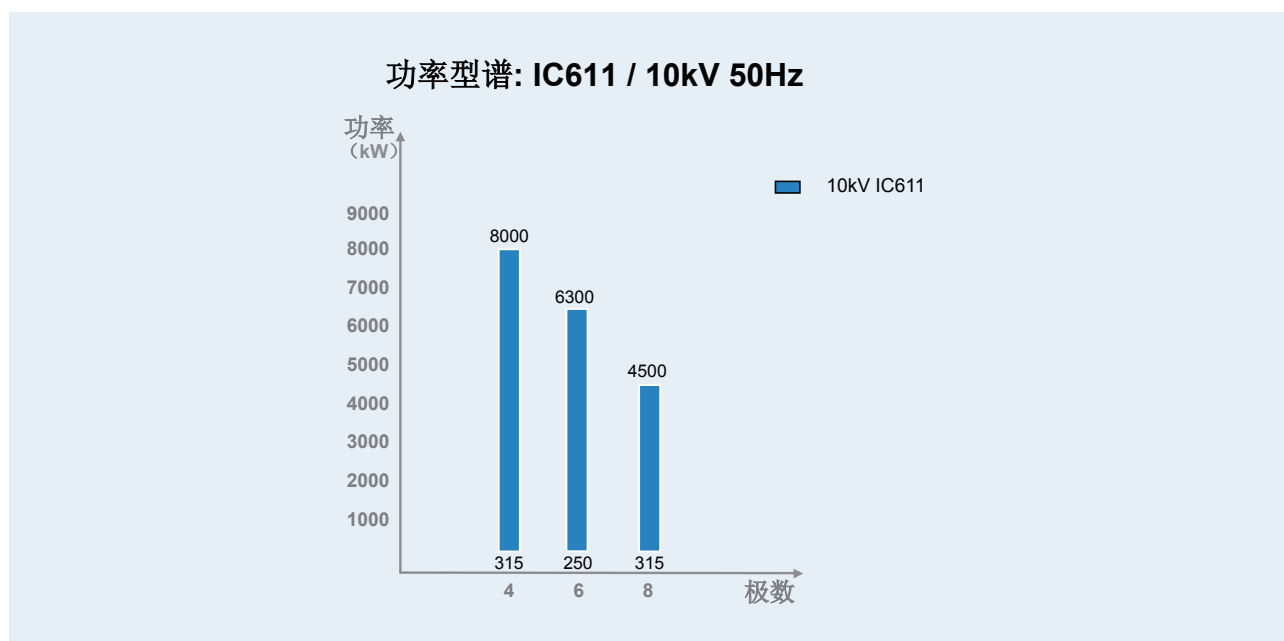
基本技术规格: Specifications

项目	规格
功率 Power range (kW)	250-8000
极数 Poles	4、6、8
中心高 Shaft height (mm)	355-710
电压 Voltage	10kV/50Hz
热分级 Thermal Class	155 (F)
冷却方式 Cooling	IC611
防护等级 Degree of protection	IP54 (IC611)
壳体材料 Frame material	钢板焊接 Steel welded
安装方式 Mounting	IM B3
效率 Efficiency	中国能效二级 (GB30254-2013) 或节能惠民工程高效高压电机水平 Efficiency Grade 2 (GB30254-2013) or High efficiency level for government subsidy
轴承 Bearings	本地知名品牌 (国外品牌可选) Local high-end (import brand as option)

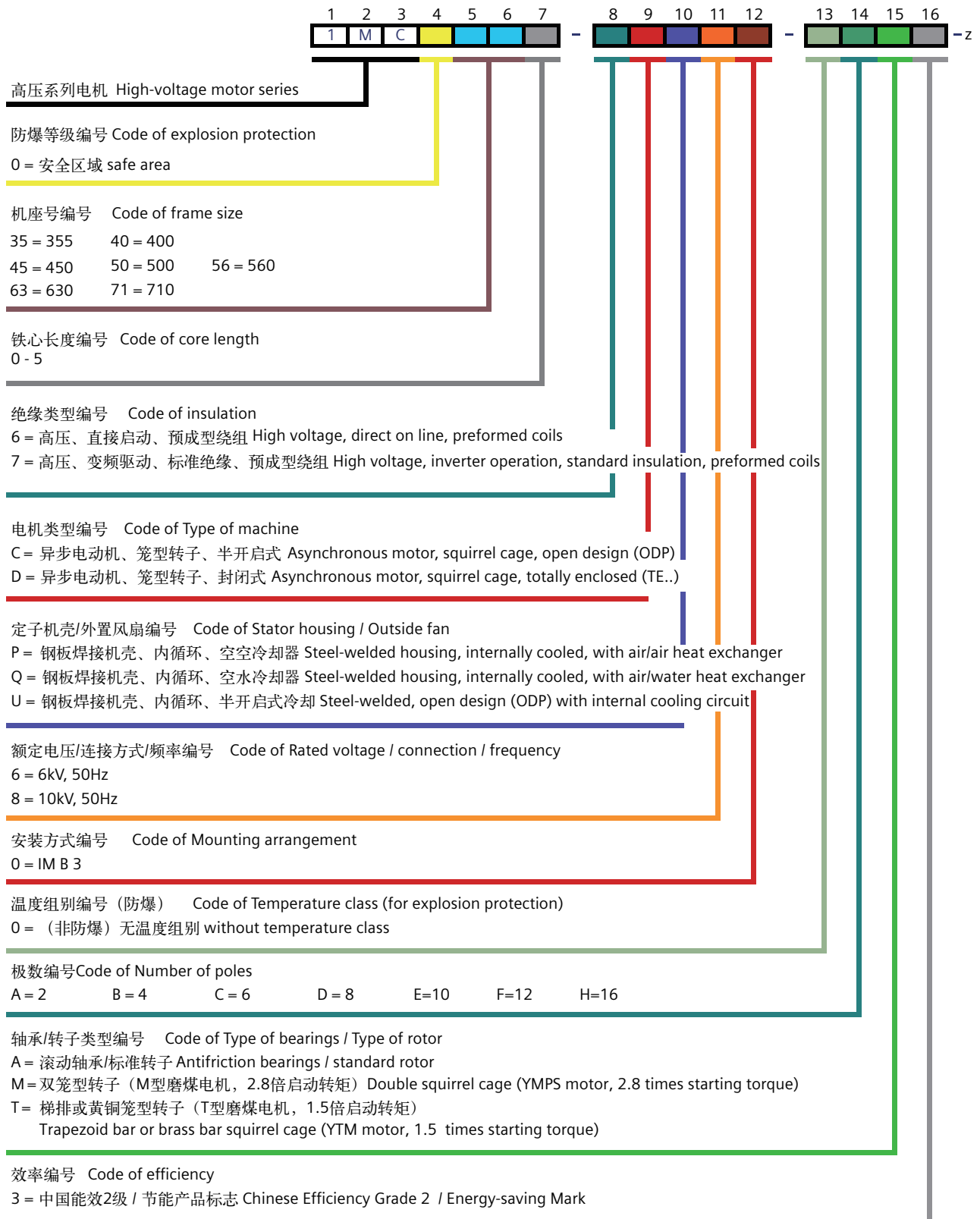
使用条件 Operating Conditions

1MC0 标准配置适用于以下工况条件 1MC0 Standard configuration is suitable for the following working conditions	
额定电压 Rated Voltage	10kV \pm 5%
额定频率 Rated Frequency	50Hz \pm 2%
环境温度 Ambient Temperature	-15 $^{\circ}$ C ~ 40 $^{\circ}$ C
海拔高度 Altitude above sea level	不超过 1000m No higher than 1000m
工作制 Duty Type	连续工作制 S1 Continuous operation S1

功率型谱 Power range



订货号描述 Order Number Description



技术特点 Technical Features

技术特点和优势 Technical features and customer benefits

特点 Features	客户收益 Customer Benefits
<ul style="list-style-type: none"> • 高效 High efficiency 	<ul style="list-style-type: none"> • 节能, 降低运行成本 Energy saving, reduce operational cost
<ul style="list-style-type: none"> • 西门子 MICALASTIC® 绝缘系统 • Siemens MICALASTIC® Insulation system • VPI 浸漆 • VPI impregnation 	<ul style="list-style-type: none"> • 可靠性高, 寿命长, 适用于不同海拔高不同负载特性的各种应用环境 • High reliability, long life time, suitable for different load characteristics and environment
<ul style="list-style-type: none"> • 轴承设计可靠性高, 不停机加排油 • High reliable bearing design, nonstop re-greasing and used grease disposal 	<ul style="list-style-type: none"> • 低振动、寿命长、减少维护成本 • Low vibration, long life time, minimum maintenance cost
<ul style="list-style-type: none"> • 结构紧凑, 功率密度高 • Compact structure, high power density 	<ul style="list-style-type: none"> • 节约设备空间 • Space saving
<ul style="list-style-type: none"> • 模块化结构设计 • Modular design 	<ul style="list-style-type: none"> • 维护保养方便 • Easy to maintain
<ul style="list-style-type: none"> • 灵活的接线盒位置选择 • Variable terminal box position 	<ul style="list-style-type: none"> • 适应客户的不同需求 • Help customer optimize the equipment layout
<ul style="list-style-type: none"> • 丰富的选件, 并可定制 • Various options, possible for customization 	<ul style="list-style-type: none"> • 满足客户的各种功能性要求 • Satisfy all the Functional requirements
<ul style="list-style-type: none"> • 性能定制 • Special design adaption 	<ul style="list-style-type: none"> • 满足客户的特殊负载要求 • Suitable for special load requirement
<ul style="list-style-type: none"> • 变频设计 • VSD design 	<ul style="list-style-type: none"> • 满足变频器供电 (完美无谐波) • VSD operation is possible (Perfect Harmony)
<ul style="list-style-type: none"> • 环境定制 • Engineering possible for special working conditions 	<ul style="list-style-type: none"> • 满足特殊环境要求, 如高海拔, 腐蚀性环境等 • Suitable for harsh conditions, e.g. high altitude, corrosive environment

技术特点 Technical Features

标准和容差 Standards and tolerances

标准号 Standard	描述 Descriptions	IEC/ISO 标准 IEC/ISO standards
GB/T191-2008	包装储运图示标志 Packaging Pictorial marking for handling of goods	ISO780:1997, MOD
GB755-2008	旋转电机 定额和性能 Rotating electrical machines: Rotating and Performance	IEC60034-1: 2004, IDT
GB/T997-2008	旋转电机结构型式、安装型式及接线盒位置的分类 (IM 代码) Classification of types of construction, mounting arrangements and terminal box position (IM Code)	IEC60034-7:2001, IDT
GB/T1032-2012	三相异步电动机试验方法 Test procedures for three-phase induction motors	IEC60034-2-1:2007 NEQ
GB1971-2006	旋转电机 线端标志与旋转方向 Terminal markings and direction of rotation	IEC60034-8: 2002, IDT
GB/T1993-1993	旋转电机冷却方法 Cooling methods for rotating electrical machines	eqv IEC60034-6:1991
GB/T4772.1-3-1999	旋转电机尺寸和输出功率等级 第 1-3 部分 Dimensions and output series for rotating electrical machines Part 1-3	IEC60072-1: 1991, IDT and IEC60072-2: 1990, IDT
GB/T4942.1-2006	旋转电机整体结构的防护等级 (IP 代码) 分级 Degrees of protection provided by the integral design for rotating electrical machines (IP Code) – classification	IEC60034-5: 2000, IDT
GB10068-2008	轴中心高为 56 mm 及以上电机的机械振动 振动的测量、评定及限值 Mechanical vibration of certain machines with shaft heights 56 mm and higher - Measurement, evaluation and limits of vibration severity	IEC 60034-14:2007, IDT
GB10069.3-2008	旋转电机噪声测定方法及限值 第 3 部分: 噪声限值 Measurement of the airborne noise emitted by rotating electric machines and the noise limit Part 3 Noise limits	IEC 60034-9:2007, IDT
GB10069.1-2006	旋转电机噪声测定方法及限值 第 1 部分: 旋转电机噪声测定方法 Measurement of the airborne noise emitted by rotating electric machines and the noise limit Part 1	ISO 1680-1:1999, MOD
GB/T22715-2016	交流电机定子成型线圈耐冲击电压水平 impulse voltage withstand levels of form wound stator coils for rotating a.c. machines	IEC 60034-15:2009, IDT
GB30254-2013	高压三相笼型异步电动机能效限定值及能效等级 Minimum allowable values of energy efficiency and energy efficiency grades for high voltage three-phase asynchronous motors	N/A
GB/T1408.1-2016	绝缘材料电气强度试验方法 第 1 部分: 工频下试验 Electrical strength of insulating materials - test methods - Part 1 tests at power frequencies	IEC 60243-1:2013, IDT
JB/T7576-1994	户内外防腐蚀旋转电机环境技术要求 Environment and technical requirement of outdoor anti-corrosion rotating machines	N/A
GB14711-2013	中小型电机安全通用要求 Safety Requirements of Small and Medium Size Rotating Electrical Machines	N/A
JB/T8992-1999	交直流电机用背包式空水冷却装置 Modular Air-water Heat Exchanger for AC and DC motors	N/A

技术特点 Technical Features

标准和容差 Standards and tolerances

项目	容差指标
电压波动 Voltage tolerance	$\pm 5\%$
频率波动 Frequency tolerance	$\pm 2\%$
效率 Efficiency	$-0.1 \times (1 - \eta)$
功率因数 Power factor	$-(1 - \cos \phi) / 6$ 最小绝对值 0.02 Minimum absolute value 0.02
转差率 Slip	$\pm 20\%$
堵转电流倍数 Locked rotor current	+20%
堵转转矩倍数 Locked rotor torque	-15%, +25%
最大转矩倍数 Maximum torque	-10%
转动惯量 Moment of inertia	$\pm 10\%$

技术特点 Technical Features

绝缘系统

MICALASTIC® 绝缘系统是西门子专有高压绝缘技术，其可靠性已经各种严苛的运行环境所验证，在全世界得到广泛认可。

MICALASTIC® 绝缘系统具有如下特点

- 极为严格的质量控制，每台机器都须经过全方位的测试
- 出色的电晕屏蔽
- 高机械强度，满足频繁起停和换向的要求
- 出色的热稳定性使电机绕组即使在极端环境下也能具有超常的寿命
- 对于热带湿热、化学腐蚀或多尘等苛刻运行环境有很好的防护

Insulation system MICALASTIC®

MICALASTIC® is a Siemens exclusive technology for high voltage machines. Its reliability is proven in all kinds of harsh environment and is well accepted world wide by customers.

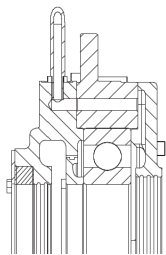
Features of Insulation system

- Extremely tight quality control and all-round tests on each machine
- Outstanding corona shielding
- High mechanical strength for frequently switching and reversing load
- Extraordinary thermal endurance which ensures long winding lifetime - even under tough environment.
- Excellent protection against harsh conditions such as high temperature, high humidity, corrosive and dusty.

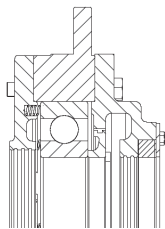
轴承配置 Bearing Assignment

中心高 355-500 4、6、8 极轴承布置图

Bearing design for shaft height 355-500 4、6、8 poles



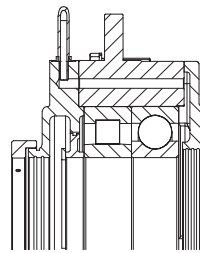
驱动端 Drive end



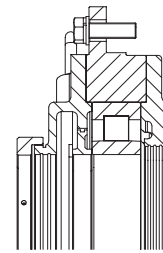
非驱动端 Non-drive end

中心高 560-630 4、6、8 以及 710 6、8 极轴承布置图

Bearing design for shaft height 560-630 4、6、8 poles and 710 6、8 poles



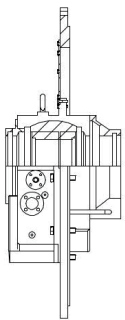
驱动端 Drive end



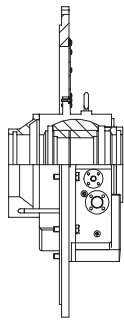
非驱动端 Non-drive end

中心高 710 4 极轴承布置图

Bearing design for shaft height 4 poles



驱动端 Drive end



非驱动端 Non-drive end

技术特点 Technical Features

中心高 Shaft Height	极数 Number of Poles	驱动端 Drive End	非驱动端 Non-drive End	固定轴承位置 Located Bearing
355-500	4、6、8	深沟球轴承 Deep groove ball bearing	深沟球轴承 Deep groove ball bearing	驱动端 Drive end
560-630	4、6、8	圆柱滚子轴承 + 深沟球轴承 Roller bearing + Deep groove ball bearing	圆柱滚子轴承 Roller bearing	驱动端 Drive end
710	4	端盖式滑动轴承 Sleeve bearing	端盖式滑动轴承 Sleeve bearing	无 No
	6、8	圆柱滚子轴承 + 深沟球轴承 Roller bearing + Deep groove ball bearing	圆柱滚子轴承 Roller bearing	驱动端 Drive end

接线盒安装位置及进线规格

主接线盒位置为右前、右后、左前、左后（从驱动端看），也可根据客户要求特殊布置。

Terminal box and connection data

Main terminal box can be placed on right side close to DE, right side close to NDE, left side close to DE, left side close to NDE (viewed from DE). It can also be placed acc. to customer special requirement.

接线盒与进线规格参数

Terminal box and cable entry specifications

主端子数量 Number of main terminals	接线螺栓规格 size of terminals	外部电缆直径 cable diameter (mm)	最大导体截面积 max. conductor cross sectional area (mm ²)	主电缆入口 数量规格 number of main cable entries	辅助引线电缆直径 diameter of auxiliary cables (mm)	辅助电缆入口 数量规格 number of auxiliary cables
3	M16	75-88	240	1- M100x2.0	11-14	3-M20x1.5

铭牌信息

变频调速三相异步电动机 VARIABLE FREQUENCY ADJUSTABLE SPEED 3-PHASE ASYNCHRONOUS MOTOR					
型号 Type	1MC0503P8B	订货号 Order No	1MC0503-6DP80-0BA3-Z		
额定功率 Power	2500 kW	额定转矩 Torque	16023 Nm	基准频率 Freq	50 Hz
额定电流 Current	170.33 A	额定电压 Voltage	10000 V	额定功率因数 Cos φ	0.88
转速范围 Speed	596-1490 r/min	最高转速 Speed	1490 r/min	额定频率范围 Freq	20-50 Hz
冷却方式 Cooling Type	IC611	热分装 ThCl	155(F)	额定频率范围 Freq	50 Hz
接法 Connection	Y	极数 Poles	4	防护等级 IP	54
标准编号 Standard	ASE47580938A		重量 Weight	74.40 kg	
序列号 Serial No	NQ/Q/300284.014.3010001		日期 Date	2019-07-05	
西门子（中国）有限公司 Siemens Ltd, China					

Nameplate Information

三相异步电动机 3-PHASE ASYNCHRONOUS MOTOR					
型号 Type	1MC0503P8B	订货号 Order No	1MC0503-6DP80-0BA3-Z		
额定功率 Power	2500 kW	额定转速 Speed	1490 r/min	额定频率 Frequency	50 Hz
额定功率因数 Cos φ	0.88	防护等级 IP	54	热分装 ThCl	155(F)
额定电流 Current	170.33 A	额定电压 Voltage	10000 V	额定效率 Efficiency	96.3 %
接法 Connection	Y	冷却方式 Cooling Type	IC611		
工作制 Duty	S1	重量 Weight	74.40 kg		
标准编号 Standard	ASE47580938A				
序列号 Serial No	NQ/Q/300284.014.3010001		日期 Date	2019-07-05	
西门子（中国）有限公司 Siemens Ltd, China					

铭牌示例 Example of nameplate

技术特点 Technical Features

电机选型

电机选型应考虑以下基本因素：

使用环境：环境温度、湿度、海拔高度等
 被驱动设备的负载特性（曲线）及转动惯量
 启动频率和允许电压降
 工作制及其它特殊要求
 温升考核
 变频器类型
 电机旋转方向
 驱动联接方式
 接线盒位置
 可按下表考虑环境温度及海拔高度对电机输出功率的影响

环境温度及海拔高度对电机输出功率的影响

IC611

冷却介质温度 CT [°C]	海拔高度（米） Installation altitude [m] above sea level						
	1000	1500	2000	2500	3000	3500	4000
30	109%	105%	102%	98%	94%	90%	85%
35	105%	101%	97%	93%	88%	84%	78%
40	100%	96%	92%	87%	82%	77%	71%
45	95%	91%	86%	81%	76%	70%	-
50	90%	85%	80%	74%	-	-	-

附加轴向和径向载荷限制

电动机轴伸上不允许承受外加的轴向力和联轴器重量以外的径向力

Motor Selection

Basic considerations when selecting a motor

Ambient conditions: temperature, moisture, altitude
 Load characteristics (curve) and moment of inertia
 Starting frequency and allowable voltage drop
 Duty type and other special requirements
 Temperature rise
 Type of converter
 Direction of rotation
 Type of coupling
 The position of the terminal box
 Below table should be considered to calculate motor output with the impact of altitude and ambient temperature

Influence of ambient temperature and installation altitude

Permissible radial and axial force on motor shaft

No axial force or additional radial forces other than the weight of coupling are allowed on motor shaft extension

选件及说明 Options and Descriptions

选件号 Option Code	描述 Description
绕组或轴承温度检测 Winding or bearing temperature monitoring	
A40	2 个三线制测温电阻 PT100 用于滚动轴承 2 resistance thermometers PT 100 for 3 wire circuit configuration, without evaluation unit for roller bearings
A42	2 个双支三线制测温电阻 PT100 用于滚动轴承 2 double resistance thermometers PT100, 3 wire circuit configuration, without evaluation unit for roller bearings
A44	1 个三线制测温电阻 PT100, 用于冷空气温度检测 1 resistance thermometer PT 100 for 3 wire circuit configuration from terminals, for cold air inlet
A45	1 个三线制测温电阻 PT100, 用于热空气温度检测 1 resistance thermometer PT 100 for 3 wire circuit configuration from terminals, for warm air outlet
A65*	6 个三线制定子绕组测温电阻PT100, 不含浪涌保护 6 slot resistance thermometers PT 100 without surge limiter for 3 wire circuit configurations from the terminals
W65	6 个双支三线制定子绕组测温电阻 PT100, 不含浪涌保护 6 slot double resistance thermometers PT 100 without surge limiter for 3 wire circuit configurations from the terminals
轴承Bearings	
G50	SPM 轴承振动检测探头安放平台 Shock pulse measuring nipple for bearings
L27	轴承绝缘 Bearing Insulation
L80	SKF 轴承 SKF bearings
接线盒Terminal Box	
Q20*	标准辅助接线盒 Standard auxiliary terminal box
Q30*	标准10kV 接线盒 Standard 10kV main terminal box
K09*	从驱动端 (DE) 看, 主接线盒位于右侧, 靠近非驱动端 (NDE), 辅助接线盒位于右侧靠近驱动端 (DE) Viewed from DE, main terminal box is on right side, close to NDE, auxiliary terminal box is on right side close to DE
K10	从驱动端 (DE) 看, 主接线盒位于左侧, 靠近非驱动端 (NDE), 辅助接线盒位于左侧靠近驱动端 (DE) Viewed from DE, main terminal box is on left side, close to NDE, auxiliary terminal box is on left side close to DE
K11	从驱动端 (DE) 看, 主接线盒位于右侧, 靠近驱动端 (DE), 辅助接线盒位于右侧靠近非驱动端 (NDE) Viewed from DE, main terminal box is on right side, close to DE, auxiliary terminal box is on right side close to NDE
K12	从驱动端 (DE) 看, 主接线盒位于左侧, 靠近驱动端 (DE), 辅助接线盒位于左侧靠近非驱动端 (NDE) Viewed from DE, main terminal box is on left side, close to DE, auxiliary terminal box is on left side close to NDE
L56	标准中性点接线盒 (3端子带短路排), 最大11kV Neutral-point terminal box - standard (3 terminal with short circuit bar) - max. 11kV
M52	辅助接线盒用于抗冷凝加热器 Separate auxiliary box terminal for heater
噪声控制Noise minimization	
L20	消音装置: 进气口消音装置 (GG3) Noise damping device: at air inlet
安装环境 Installation environment	

* 默认配置 default configuration

选件及说明 Options and Descriptions

选件号 Option Code	描述 Description
D06	海拔高度1500m 1500m above sea level
D07	海拔高度2000m 2000m above sea level
D08	海拔高度2500m 2500m above sea level
D09	海拔高度3000m 3000m above sea level
D11	环境温度45°C Ambient temperature 45°C
D12	环境温度50°C Ambient temperature 50°C
D04	环境温度-30°C Ambient temperature -30°C
喷漆及防腐保护Paint finish and anticorrosion protection	
Y53	标准涂层, 80-140 μ m, 非标准颜色 Standard coating, 80-140 μ m, non-standard color
Y54	特殊涂层, 100-160 μ m (适用于酸碱度不大于1%的腐蚀性气体环境) Special coating 100-160 μ m (for aggressive atmospheres up to 1% acid and alkali concentration)
V09	特殊涂层 (F1, WF1 或 C3) 140-180 μ m Special coating (F1, WF1 or C3) 140-180 μ m
V11	特殊涂层 (F2, WF2 或 C4) 180-240 μ m Special coating (F2, WF2 or C4) 180-240 μ m
V19	特殊涂层 (海上平台超强防腐型或 C5-1、C5-M) 260-320 μ m Special coating (off shore or C5-1, C5-M) 260-320 μ m
抗冷凝加热器Anti-condensation heater,	
M12	抗冷凝加热器 110 ~ 120V Anti-condensation heating device 110 ~ 120V
M13	抗冷凝加热器 220 ~ 240V Anti-condensation heating device 220 ~ 240V
Y83	其它电压的抗冷凝加热器,需要描述电压 Anti-condensation heater with other rated voltage, voltage to be specified
机械设计Mechanical design	
Y55	非标驱动轴 (仅在技术可行时) Special shaft (when technically feasible)
K97 *	(仅针对IC611电机) 顺时针旋转 (从驱动端看) (Only for IC611 motor) Clockwise (viewed from DE)
K98	(仅针对IC611电机) 逆时针旋转 (从驱动端看) (Only for IC611 motor) Counter clockwise (viewed from DE)
测试Tests	
F01	常规测试 — 现场见证 Routine test – with witness
F82	型式试验 — 非现场见证 Type test – without witness
F83	型式试验 — 现场见证 Type test – with witness
铭牌Name Plate	
Y82	第二铭牌:客户定制铭牌信息, Second name plate with customer data
防护等级 Degree of protection	
Q74	IP55

* 默认配置 default configuration

电机默认配置表 Default Configuration

如无特别说明，电机将按以下配置交货

If not otherwise specified, the motor will be delivered with the following configuration

配置 Configuration	描述 Descriptions	选件号 Option Code
安装方式 Mounting	IM B3	N/A
旋转方向 Direction of rotation	(仅针对 IC611 电机) 顺时针旋转 (从驱动端看) (Only for IC611 Motor) Clockwise (viewed from DE)	K97
防护等级 Degree of protection	IP54 (IC611)	N/A
绕组保护 Winding Protection	6 个三线制定子绕组测温电阻 PT100, 不含浪涌保护 6 slot resistance thermometers PT 100 without surge limiter for 3 wire circuit configurations from the terminals	A65
接线盒及位置 Terminal box position	标准主接线盒及辅助接线盒。从驱动端 (DE) 看, 主接线盒位于右侧, 靠近非驱动端 (NDE), 辅助接线盒位于右侧靠近驱动端 (DE) Standard main terminal box and auxiliary terminal box. Viewed from DE, main terminal box is on right side close to NDE, auxiliary terminal box is on right side close to DE.	K09, Q20, Q30
面漆颜色 Color of finish paint	RAL7031	N/A

选型技术数据表 Technical Data

4 极 IM B3 IC611 10kV 50Hz

订货号 Order No.	型号 Type	额定 功率 P_N	额定 转速 n_N	额定 电流 I_N	效率 Efficiency η (GB1032 -2012)	功率 因数 Φ	额定 转矩 T_N	最大 转矩 $\frac{T_{max}}{T_N}$	堵转 转矩 $\frac{T_{st}}{T_N}$	堵转 电流 $\frac{I_{st}}{I_N}$	冷却 空气 流量 Cooling air	转动惯量 ¹⁾ Moment of Inertia		重量 Weight	
					4/4	4/4						电机 motor	负载 external max. perm.	整机 total	转子 rotor
1MC0350-6DP80-0BA3-Z	1MC0350P8B	315	1485	23	93.5	0.86	2026	1.8	0.7	7.0	0.62	5.0	110	2250	474
1MC0351-6DP80-0BA3-Z	1MC0351P8B	355	1485	25	93.6	0.86	2283	1.8	0.7	7.0	0.68	5.4	120	2320	492
1MC0352-6DP80-0BA3-Z	1MC0352P8B	400	1485	29	93.9	0.86	2572	1.8	0.7	7.0	0.73	6.1	130	2410	520
1MC0353-6DP80-0BA3-Z	1MC0353P8B	450	1483	32	94.1	0.86	2898	1.8	0.7	7.0	0.76	6.8	150	2580	569
1MC0354-6DP80-0BA3-Z	1MC0354P8B	500	1483	36	94.2	0.86	3220	1.8	0.7	7.0	0.79	7.6	150	2690	602
1MC0400-6DP80-0BA3-Z	1MC0400P8B	560	1488	40	94.4	0.86	3594	1.8	0.7	7.0	0.93	9.2	210	2960	633
1MC0401-6DP80-0BA3-Z	1MC0401P8B	630	1488	45	94.6	0.86	4043	1.8	0.7	7.0	1.00	10.1	240	3060	663
1MC0402-6DP80-0BA3-Z	1MC0402P8B	710	1489	50	95.1	0.87	4554	1.8	0.7	7.0	1.07	11.1	350	3250	767
1MC0403-6DP80-0BA3-Z	1MC0403P8B	800	1489	56	95.2	0.87	5131	1.8	0.7	7.0	1.14	12.6	360	3440	792
1MC0404-6DP80-0BA3-Z	1MC0404P8B	900	1489	63	95.3	0.87	5772	1.8	0.7	7.0	1.24	14.3	420	3640	834
1MC0450-6DP80-0BA3-Z	1MC0450P8B	1000	1487	70	95.4	0.87	6422	1.8	0.7	7.0	1.17	14.6	420	4170	881
1MC0451-6DP80-0BA3-Z	1MC0451P8B	1120	1488	78	95.5	0.87	7188	1.8	0.7	7.0	1.25	15.5	420	4250	901
1MC0452-6DP80-0BA3-Z	1MC0452P8B	1250	1487	86	95.6	0.88	8028	1.8	0.7	7.0	1.39	17.0	420	4430	946
1MC0453-6DP80-0BA3-Z	1MC0453P8B	1400	1487	96	95.8	0.88	8991	1.8	0.7	7.0	1.48	18.7	550	4720	1035
1MC0454-6DP80-0BA3-Z	1MC0454P8B	1600	1487	109	95.9	0.88	10276	1.8	0.7	7.0	1.53	21.0	590	4990	1095
1MC0500-6DP80-0BA3-Z	1MC0500P8B	1800	1489	123	96.0	0.88	11545	1.8	0.6	7.0	1.93	35.9	620	5750	1347
1MC0501-6DP80-0BA3-Z	1MC0501P8B	2000	1490	137	96.1	0.88	12819	1.8	0.6	7.0	2.14	39.6	740	5980	1417
1MC0502-6DP80-0BA3-Z	1MC0502P8B	2240	1490	153	96.2	0.88	14357	1.8	0.6	7.0	2.28	44.1	1060	6480	1569
1MC0503-6DP80-0BA3-Z	1MC0503P8B	2500	1490	170	96.3	0.88	16023	1.8	0.6	7.0	2.36	48.2	1080	6750	1646
1MC0560-6DP80-0BA3-Z	1MC0560P8B	2800	1491	189	96.3	0.89	17934	1.8	0.6	7.0	2.65	78.2	1350	8490	2156
1MC0561-6DP80-0BA3-Z	1MC0561P8B	3150	1491	212	96.4	0.89	20176	1.8	0.6	7.0	2.72	84.1	1350	8820	2245
1MC0562-6DP80-0BA3-Z	1MC0562P8B	3550	1491	239	96.4	0.89	22738	1.8	0.6	7.0	2.83	90.0	1350	9320	2406
1MC0563-6DP80-0BA3-Z	1MC0563P8B	4000	1491	269	96.4	0.89	25620	1.8	0.6	7.0	2.89	93.6	1350	9520	2459
1MC0630-6DP80-0BA3-Z	1MC0630P8B	4500	1490	303	96.4	0.89	28842	1.8	0.5	7.0	3.89	135.7	1310	12940	2964
1MC0631-6DP80-0BA3-Z	1MC0631P8B	5000	1491	336	96.5	0.89	32025	1.8	0.5	7.0	4.02	147.0	1420	13400	3102
1MC0632-6DP80-0BA3-Z	1MC0632P8B	5600	1491	376	96.6	0.89	35869	1.8	0.5	7.0	4.18	159.0	1490	14060	3287
1MC0710-6DP80-0BD3-Z	1MC0710P8B	6300	1490	418	96.7	0.9	40379	1.8	0.5	6.5	7.21	380.9	1270	17950	6112
1MC0711-6DP80-0BD3-Z	1MC0711P8B	7100	1491	470	96.9	0.9	45476	1.8	0.5	6.5	7.27	403.1	1270	18500	6299
1MC0712-6DP80-0BD3-Z	1MC0712P8B	8000	1491	529	97.0	0.9	51241	1.8	0.5	6.5	7.35	423.2	1270	18950	6481

¹⁾ 直接启动时的最大负载转动惯量是基于以下条件

- 启动电压不小于 0.85 倍额定电压 U_N
- 负载转矩与转速成平方关系
- 负载阻转矩不应超过额定转矩 T_N 的 35%

¹⁾ The maximum external moment of inertia for direct online starting is based on the following conditions :

- The starting voltage is not less than 0.85 x rated voltage U_N .
- The load torque increases approximately according to a square-law with the speed.
- The load torque should not exceed 35% rated torque T_N .

选型技术数据表 Technical Data

6 极 IM B3 IC611 10kV 50Hz

订货号 Order No.	型号 Type	额定 功率 P_N	额定 转速 n_N	额定 电流 I_N	效率 Efficiency η (GB1032 -2012)	功率 因数 Φ	额定 转矩 T_N	最大 转矩 $\frac{T_{max}}{T_N}$	堵转 转矩 $\frac{T_{st}}{T_N}$	堵转 电流 $\frac{I_{st}}{I_N}$	冷却 空气 流量 Cooling air	转动惯量 ¹⁾ Moment of Inertia		重量 Weight	
					4/4	4/4						电机 motor	负载 external max. perm.	整机 total	转子 rotor
					%			Nm				kg m ²	kg m ²	kg	kg
1MC0350-6DP80-0CA3-Z	1MC0350P8C	250	988	19	92.9	0.82	2416	1.8	0.7	6.5	0.44	6.8	320	2550	594
1MC0351-6DP80-0CA3-Z	1MC0351P8C	280	989	21	93.1	0.82	2704	1.8	0.7	6.5	0.47	7.2	340	2650	621
1MC0352-6DP80-0CA3-Z	1MC0352P8C	315	989	24	93.4	0.82	3042	1.8	0.7	6.5	0.49	7.9	340	2740	649
1MC0353-6DP80-0CA3-Z	1MC0353P8C	355	986	26	93.5	0.83	3438	1.8	0.7	6.5	0.54	8.1	340	2810	681
1MC0354-6DP80-0CA3-Z	1MC0354P8C	400	986	30	93.7	0.83	3874	1.8	0.7	6.5	0.54	8.9	360	2920	712
1MC0400-6DP80-0CA3-Z	1MC0400P8C	450	990	33	93.8	0.83	4341	1.8	0.7	6.5	0.67	11.3	380	3300	772
1MC0401-6DP80-0CA3-Z	1MC0401P8C	500	990	37	94.2	0.83	4823	1.8	0.7	6.5	0.71	12.5	420	3420	810
1MC0402-6DP80-0CA3-Z	1MC0402P8C	560	990	41	94.4	0.84	5402	1.8	0.7	6.5	0.74	13.7	560	3550	859
1MC0403-6DP80-0CA3-Z	1MC0403P8C	630	990	46	94.7	0.84	6077	1.8	0.7	6.5	0.81	15.5	640	3860	949
1MC0404-6DP80-0CA3-Z	1MC0404P8C	710	990	51	94.8	0.84	6849	1.8	0.7	6.5	0.83	17.4	730	4050	1006
1MC0450-6DP80-0CA3-Z	1MC0450P8C	800	990	57	95.0	0.85	7717	1.8	0.7	6.5	1.13	25.8	1300	4470	1109
1MC0451-6DP80-0CA3-Z	1MC0451P8C	900	991	64	95.2	0.85	8673	1.8	0.7	6.5	1.13	25.8	1170	4480	1109
1MC0452-6DP80-0CA3-Z	1MC0452P8C	1000	990	71	95.3	0.85	9646	1.8	0.7	6.5	1.15	28.3	1250	4670	1164
1MC0453-6DP80-0CA3-Z	1MC0453P8C	1120	991	80	95.5	0.85	10793	1.8	0.7	6.5	1.20	30.8	1400	4960	1261
1MC0454-6DP80-0CA3-Z	1MC0454P8C	1250	991	89	95.6	0.85	12046	1.8	0.7	6.5	1.23	33.6	1400	5160	1331
1MC0500-6DP80-0CA3-Z	1MC0500P8C	1400	993	99	95.8	0.85	13464	1.8	0.7	6.5	1.39	50.5	1750	6110	1636
1MC0501-6DP80-0CA3-Z	1MC0501P8C	1600	993	113	95.9	0.85	15388	1.8	0.7	6.5	1.44	52.7	1750	6380	1676
1MC0502-6DP80-0CA3-Z	1MC0502P8C	1800	993	127	96.0	0.85	17311	1.8	0.7	6.5	1.59	58.5	1650	6720	1834
1MC0503-6DP80-0CA3-Z	1MC0503P8C	2000	993	141	96.1	0.85	19235	1.8	0.7	6.5	1.67	65.6	2030	7090	1959
1MC0560-6DP80-0CA3-Z	1MC0560P8C	2240	992	156	96.1	0.86	21565	1.8	0.6	6.5	2.15	105.8	2980	8300	2439
1MC0561-6DP80-0CA3-Z	1MC0561P8C	2500	992	175	96.1	0.86	24068	1.8	0.6	6.5	2.15	111.5	2980	8530	2510
1MC0562-6DP80-0CA3-Z	1MC0562P8C	2800	993	195	96.2	0.86	26928	1.8	0.6	6.5	2.45	127.8	3540	9410	2843
1MC0563-6DP80-0CA3-Z	1MC0563P8C	3150	993	220	96.3	0.86	30295	1.8	0.6	6.5	2.52	140.7	3790	10060	3162
1MC0630-6DP80-0CA3-Z	1MC0630P8C	3550	994	247	96.4	0.86	34107	1.8	0.6	6.5	3.03	197.3	4210	12590	3437
1MC0631-6DP80-0CA3-Z	1MC0631P8C	4000	994	278	96.5	0.86	38431	1.8	0.6	6.5	3.13	205.7	4290	12860	3521
1MC0632-6DP80-0CA3-Z	1MC0632P8C	4500	994	313	96.5	0.86	43234	1.8	0.6	6.5	3.28	238.8	5240	14130	3941
1MC0710-6DP80-0CA3-Z	1MC0710P8C	5000	995	343	96.6	0.87	47990	1.8	0.6	6.5	4.19	447.3	4640	17360	5623
1MC0711-6DP80-0CA3-Z	1MC0711P8C	5600	995	385	96.6	0.87	53749	1.8	0.6	6.5	4.28	472.2	4640	17780	5817
1MC0712-6DP80-0CA3-Z	1MC0712P8C	6300	995	432	96.7	0.87	60467	1.8	0.6	6.5	4.35	497.2	4640	18280	6009

¹⁾ 直接启动时的最大负载转动惯量是基于以下条件

- 启动电压不小于 0.85 倍额定电压 U_N
- 负载转矩与转速成平方关系
- 负载阻转矩不应超过额定转矩 T_N 的 35%

¹⁾ The maximum external moment of inertia for direct online starting is based on the following conditions :

- The starting voltage is not less than 0.85 x rated voltage U_N .
- The load torque increases approximately according to a square-law with the speed.
- The load torque should not exceed 35% rated torque T_N .

选型技术数据表 Technical Data

8 极 IM B3 IC611 10kV 50Hz

订货号 Order No.	型号 Type	额定 功率 P_N	额定 转速 n_N	额定 电流 I_N	效率 Efficiency η (GB1032 -2012)	功率 因数 Φ	额定 转矩 T_N	最大 转矩 $\frac{T_{max}}{T_N}$	堵转 转矩 $\frac{T_{st}}{T_N}$	堵转 电流 $\frac{I_{st}}{I_N}$	冷却 空气 流量 Cooling air	转动惯量 ¹⁾ Moment of Inertia		重量 Weight	
					4/4	4/4						电机 motor	负载 external max. perm.	整机 total	转子 rotor
					%							Nm			m^2
1MC0400-6DP80-0DA3-Z	1MC0400P8D	315	742	25	93.4	0.77	4054	1.8	0.7	6.0	0.43	10.9	740	3240	760
1MC0401-6DP80-0DA3-Z	1MC0401P8D	355	742	28	93.7	0.77	4569	1.8	0.7	6.0	0.46	12.1	830	3360	800
1MC0402-6DP80-0DA3-Z	1MC0402P8D	400	742	32	93.8	0.78	5148	1.8	0.7	6.0	0.49	13.2	1070	3490	844
1MC0403-6DP80-0DA3-Z	1MC0403P8D	450	741	35	93.9	0.78	5800	1.8	0.7	6.0	0.54	14.9	1380	3800	944
1MC0404-6DP80-0DA3-Z	1MC0404P8D	500	741	39	94.3	0.79	6444	1.8	0.7	6.0	0.59	16.9	1480	3980	994
1MC0450-6DP80-0DA3-Z	1MC0450P8D	560	743	43	94.6	0.80	7198	1.8	0.7	6.0	0.77	26.6	2570	4400	1134
1MC0451-6DP80-0DA3-Z	1MC0451P8D	630	742	47	94.9	0.82	8108	1.8	0.7	6.0	0.77	26.6	2360	4430	1134
1MC0452-6DP80-0DA3-Z	1MC0452P8D	710	742	53	95.0	0.82	9138	1.8	0.7	6.0	0.80	29.5	2480	4630	1199
1MC0453-6DP80-0DA3-Z	1MC0453P8D	800	742	59	95.2	0.82	10296	1.8	0.7	6.0	0.85	32.0	2590	4950	1306
1MC0454-6DP80-0DA3-Z	1MC0454P8D	900	741	66	95.3	0.82	11599	1.8	0.7	6.0	0.88	36.0	3120	5220	1386
1MC0500-6DP80-0DA3-Z	1MC0500P8D	1000	743	73	95.5	0.83	12853	1.8	0.7	6.0	1.02	48.1	2060	5780	1566
1MC0501-6DP80-0DA3-Z	1MC0501P8D	1120	744	81	95.6	0.83	14376	1.8	0.7	6.0	1.10	54.2	2180	6080	1674
1MC0502-6DP80-0DA3-Z	1MC0502P8D	1250	744	91	95.7	0.83	16045	1.8	0.7	6.0	1.18	60.7	3370	6690	1862
1MC0503-6DP80-0DA3-Z	1MC0503P8D	1400	744	102	95.8	0.83	17970	1.8	0.7	6.0	1.29	68.6	3500	7090	2001
1MC0560-6DP80-0DA3-Z	1MC0560P8D	1600	743	113	95.8	0.85	20565	1.8	0.7	6.0	1.57	113.7	6010	8150	2490
1MC0561-6DP80-0DA3-Z	1MC0561P8D	1800	744	128	95.8	0.85	23105	1.8	0.7	6.0	1.60	128.8	6500	8630	2675
1MC0562-6DP80-0DA3-Z	1MC0562P8D	2000	743	142	95.9	0.85	25707	1.8	0.7	6.0	1.77	142.0	7710	9310	2931
1MC0563-6DP80-0DA3-Z	1MC0563P8D	2240	744	159	95.9	0.85	28753	1.8	0.7	6.0	1.82	156.4	9680	9790	3107
1MC0630-6DP80-0DA3-Z	1MC0630P8D	2500	745	177	96.0	0.85	32047	1.8	0.6	6.5	2.27	232.9	7520	12440	3669
1MC0631-6DP80-0DA3-Z	1MC0631P8D	2800	745	198	96.1	0.85	35893	1.8	0.6	6.5	2.34	243.0	8020	12700	3764
1MC0632-6DP80-0DA3-Z	1MC0632P8D	3150	745	222	96.2	0.85	40379	1.8	0.6	6.5	2.46	282.8	10410	13960	4229
1MC0710-6DP80-0DA3-Z	1MC0710P8D	3550	746	247	96.3	0.86	45446	1.8	0.6	6.5	3.18	517.0	7600	16410	5520
1MC0711-6DP80-0DA3-Z	1MC0711P8D	4000	746	279	96.4	0.86	51206	1.8	0.6	6.5	3.24	546.3	7600	16830	5710
1MC0712-6DP80-0DA3-Z	1MC0712P8D	4500	746	313	96.5	0.86	57607	1.8	0.6	6.5	3.29	575.8	7950	17290	5901

¹⁾ 直接启动时的最大负载转动惯量是基于以下条件

- 启动电压不小于 0.85 倍额定电压 U_N
- 负载转矩与转速成平方关系
- 负载阻转矩不应超过额定转矩 T_N 的 35%

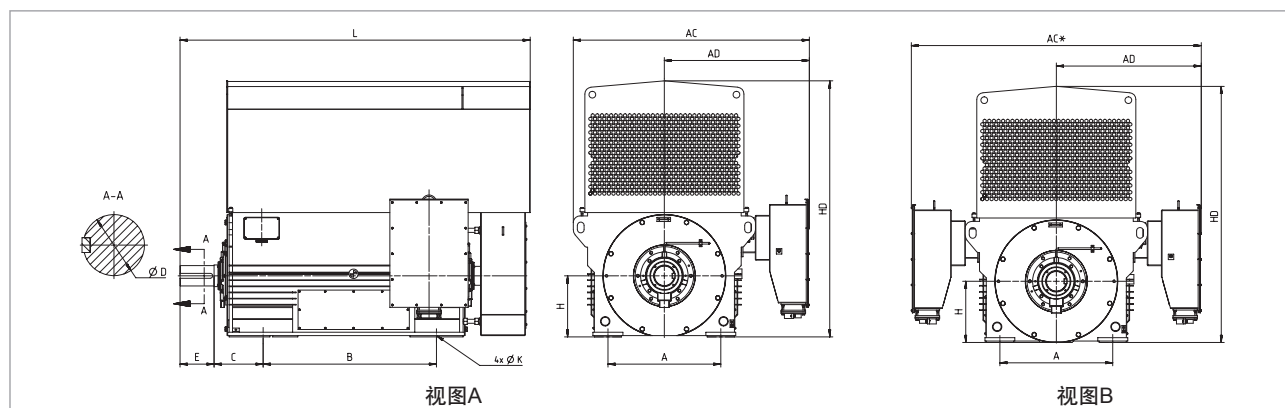
¹⁾ The maximum external moment of inertia for direct online starting is based on the following conditions :

- The starting voltage is not less than 0.85 x rated voltage U_N .
- The load torque increases approximately according to a square-law with the speed.
- The load torque should not exceed 35% rated torque T_N .

外形及安装尺寸图

Outline and Installation Dimensions

IMB3 IC611 10kV 4 极



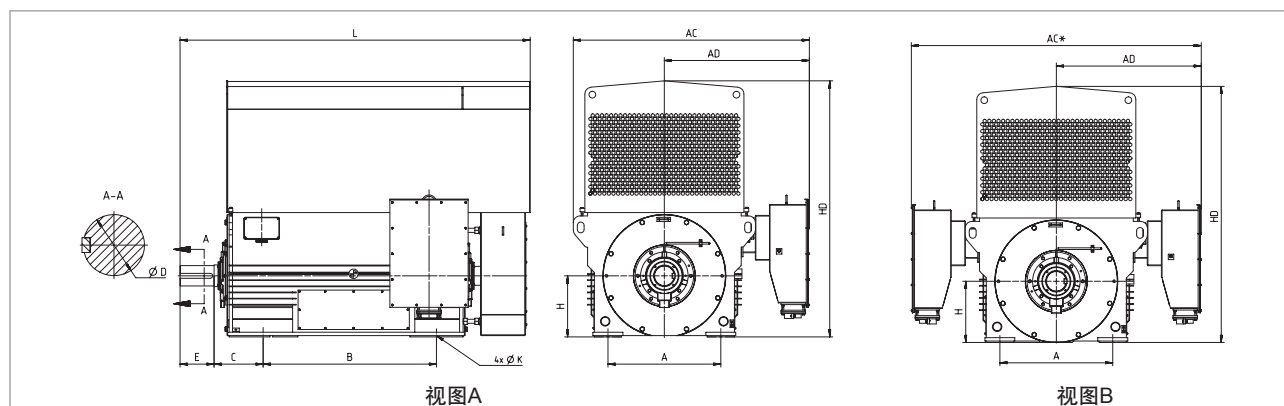
订货号 Order No.	额定功率 10 kV kW	尺寸										
		A	B	C	D	E	H	K	AC	AD	HD	L
mm												
1MC0350-6DP80-0BA3	315	630	900	335	110	210	355	28	1520	970	1520	2050
1MC0351-6DP80-0BA3	355	630	900	335	110	210	355	28	1520	970	1520	2050
1MC0352-6DP80-0BA3	400	630	900	335	110	210	355	28	1520	970	1520	2050
1MC0353-6DP80-0BA3	450	630	1000	335	110	210	355	28	1520	970	1520	2180
1MC0354-6DP80-0BA3	500	630	1000	335	110	210	355	28	1520	970	1520	2180
1MC0400-6DP80-0BA3	560	710	900	375	120	210	400	35	1610	1005	1595	2170
1MC0401-6DP80-0BA3	630	710	900	375	120	210	400	35	1610	1005	1595	2170
1MC0402-6DP80-0BA3	710	710	900	375	120	210	400	35	1610	1005	1595	2170
1MC0403-6DP80-0BA3	800	710	1000	375	120	210	400	35	1610	1005	1595	2340
1MC0404-6DP80-0BA3	900	710	1000	375	120	210	400	35	1610	1005	1595	2340
1MC0450-6DP80-0BA3	1000	800	1120	375	140	250	450	35	1740	1070	1890	2400
1MC0451-6DP80-0BA3	1120	800	1120	375	140	250	450	35	1740	1070	1890	2400
1MC0452-6DP80-0BA3	1250	800	1120	375	140	250	450	35	1740	1070	1890	2400
1MC0453-6DP80-0BA3	1400	800	1250	375	140	250	450	35	1740	1070	1890	2560
1MC0454-6DP80-0BA3	1600	800	1250	375	140	250	450	35	1740	1070	1890	2560
1MC0500-6DP80-0BA3	1800	900	1120	375	160	300	500	42	1840	1120	2090	2635
1MC0501-6DP80-0BA3	2000	900	1120	375	160	300	500	42	1840	1120	2090	2635
1MC0502-6DP80-0BA3	2240	900	1400	375	160	300	500	42	1840	1120	2090	2825
1MC0503-6DP80-0BA3	2500	900	1400	375	160	300	500	42	1840	1120	2090	2825
1MC0560-6DP80-0BA3	2800	1000	1500	400	180	330	560	42	2380*	1190	2290	2960
1MC0561-6DP80-0BA3	3150	1000	1500	400	180	330	560	42	2380*	1190	2290	2960
1MC0562-6DP80-0BA3	3550	1000	1500	400	180	330	560	42	2380*	1190	2290	3120
1MC0563-6DP80-0BA3	4000	1000	1500	400	180	330	560	42	2380*	1190	2290	3120
1MC0630-6DP80-0BA3	4500	1250	1500	475	200	350	630	48	2990*	1495	2430	3310
1MC0631-6DP80-0BA3	5000	1250	1500	475	200	350	630	48	2990*	1495	2430	3310
1MC0632-6DP80-0BA3	5600	1250	1600	475	200	350	630	48	2990*	1495	2430	3410
1MC0710-6DP80-0BD3	6300	1400	1800	560	250	410	710	48	3150*	1575	3050	4120
1MC0711-6DP80-0BD3	7100	1400	1800	560	250	410	710	48	3150*	1575	3050	4120
1MC0712-6DP80-0BD3	8000	1400	1800	560	250	410	710	48	3150*	1575	3050	4120

注：标*的尺寸参考视图B

外形及安装尺寸图

Outline and Installation Dimensions

IMB3 IC611 10kV 6 极



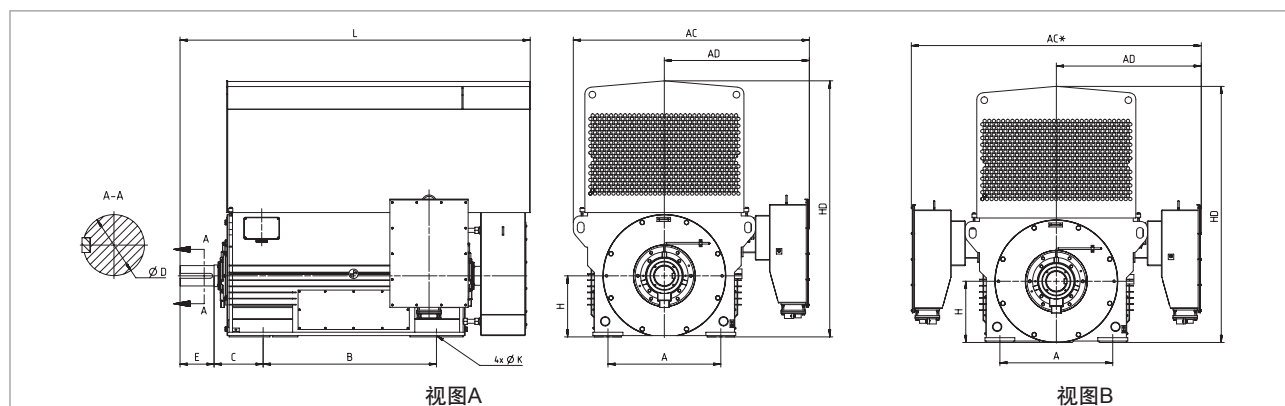
订货号 Order No.	额定功率 10 kV kW	尺寸										
		A	B	C	D	E	H	K	AC	AD	HD	L
		mm										
1MC0350-6DP80-0CA3	250	630	900	335	120	210	355	28	1520	970	1520	2130
1MC0351-6DP80-0CA3	280	630	900	335	120	210	355	28	1520	970	1520	2130
1MC0352-6DP80-0CA3	315	630	900	335	120	210	355	28	1520	970	1520	2130
1MC0353-6DP80-0CA3	355	630	1000	335	120	210	355	28	1520	970	1520	2220
1MC0354-6DP80-0CA3	400	630	1000	335	120	210	355	28	1520	970	1520	2220
1MC0400-6DP80-0CA3	450	710	900	375	140	250	400	35	1610	1005	1820	2210
1MC0401-6DP80-0CA3	500	710	900	375	140	250	400	35	1610	1005	1820	2210
1MC0402-6DP80-0CA3	560	710	900	375	140	250	400	35	1610	1005	1820	2210
1MC0403-6DP80-0CA3	630	710	1000	375	140	250	400	35	1610	1005	1820	2380
1MC0404-6DP80-0CA3	710	710	1000	375	140	250	400	35	1610	1005	1820	2380
1MC0450-6DP80-0CA3	800	800	1120	375	150	250	450	35	1740	1070	1890	2460
1MC0451-6DP80-0CA3	900	800	1120	375	150	250	450	35	1740	1070	1890	2460
1MC0452-6DP80-0CA3	1000	800	1120	375	150	250	450	35	1740	1070	1890	2460
1MC0453-6DP80-0CA3	1120	800	1250	375	150	250	450	35	1740	1070	1890	2610
1MC0454-6DP80-0CA3	1250	800	1250	375	150	250	450	35	1740	1070	1890	2610
1MC0500-6DP80-0CA3	1400	900	1120	375	170	300	500	42	1840	1120	2090	2635
1MC0501-6DP80-0CA3	1600	900	1120	375	170	300	500	42	1840	1120	2090	2635
1MC0502-6DP80-0CA3	1800	900	1400	375	170	300	500	42	1840	1120	2090	2825
1MC0503-6DP80-0CA3	2000	900	1400	375	170	300	500	42	1840	1120	2090	2825
1MC0560-6DP80-0CA3	2240	1000	1400	400	190	380	560	42	2380*	1190	2290	2910
1MC0561-6DP80-0CA3	2500	1000	1400	400	190	380	560	42	2380*	1190	2290	2910
1MC0562-6DP80-0CA3	2800	1000	1500	400	190	380	560	42	2380*	1190	2290	3170
1MC0563-6DP80-0CA3	3150	1000	1500	400	190	380	560	42	2380*	1190	2290	3170
1MC0630-6DP80-0CA3	3550	1250	1400	475	220	350	630	48	2990*	1495	2430	3130
1MC0631-6DP80-0CA3	4000	1250	1400	475	220	350	630	48	2990*	1495	2430	3130
1MC0632-6DP80-0CA3	4500	1250	1600	475	220	350	630	48	2990*	1495	2430	3310
1MC0710-6DP80-0CA3	5000	1400	1600	500	250	410	710	48	3150*	1575	2590	3480
1MC0711-6DP80-0CA3	5600	1400	1600	500	250	410	710	48	3150*	1575	2590	3480
1MC0712-6DP80-0CA3	6300	1400	1600	500	250	410	710	48	3150*	1575	2590	3480

注：标*的尺寸参考视图B

外形及安装尺寸图

Outline and Installation Dimensions

IMB3 IC611 10kV 8 极



订货号 Order No.	额定功率 10 kV kW	尺寸										
		A	B	C	D	E	H	K	AC	AD	HD	L
		mm										
1MC0400-6DP80-0DA3	315	710	900	375	140	250	400	35	1610	1005	1820	2210
1MC0401-6DP80-0DA3	355	710	900	375	140	250	400	35	1610	1005	1820	2210
1MC0402-6DP80-0DA3	400	710	900	375	140	250	400	35	1610	1005	1820	2210
1MC0403-6DP80-0DA3	450	710	1000	375	140	250	400	35	1610	1005	1820	2380
1MC0404-6DP80-0DA3	500	710	1000	375	140	250	400	35	1610	1005	1820	2380
1MC0450-6DP80-0DA3	560	800	1120	375	150	250	450	35	1740	1070	1890	2400
1MC0451-6DP80-0DA3	630	800	1120	375	150	250	450	35	1740	1070	1890	2400
1MC0452-6DP80-0DA3	710	800	1120	375	150	250	450	35	1740	1070	1890	2400
1MC0453-6DP80-0DA3	800	800	1250	375	150	250	450	35	1740	1070	1890	2560
1MC0454-6DP80-0DA3	900	800	1250	375	150	250	450	35	1740	1070	1890	2560
1MC0500-6DP80-0DA3	1000	900	1120	375	170	300	500	42	1840	1120	2090	2505
1MC0501-6DP80-0DA3	1120	900	1120	375	170	300	500	42	1840	1120	2090	2505
1MC0502-6DP80-0DA3	1250	900	1400	375	170	300	500	42	1840	1120	2090	2755
1MC0503-6DP80-0DA3	1400	900	1400	375	170	300	500	42	1840	1120	2090	2755
1MC0560-6DP80-0DA3	1600	1000	1400	400	190	380	560	42	2380*	1190	2290	2910
1MC0561-6DP80-0DA3	1800	1000	1400	400	190	380	560	42	2380*	1190	2290	2910
1MC0562-6DP80-0DA3	2000	1000	1500	400	190	380	560	42	2380*	1190	2290	3090
1MC0563-6DP80-0DA3	2240	1000	1500	400	190	380	560	42	2380*	1190	2290	3090
1MC0630-6DP80-0DA3	2500	1250	1400	475	220	350	630	48	2990*	1495	2430	3130
1MC0631-6DP80-0DA3	2800	1250	1400	475	220	350	630	48	2990*	1495	2430	3130
1MC0632-6DP80-0DA3	3150	1250	1600	475	220	350	630	48	2990*	1495	2430	3310
1MC0710-6DP80-0DA3	3550	1400	1600	500	250	410	710	48	3150*	1575	2590	3480
1MC0711-6DP80-0DA3	4000	1400	1600	500	250	410	710	48	3150*	1575	2590	3480
1MC0712-6DP80-0DA3	4500	1400	1600	500	250	410	710	48	3150*	1575	2590	3480

注：标*的尺寸参考视图B

电机询价数据表

Motor Inquiry Data Sheet

姓名/Name:	邮件/E-Mail:
电话/Phone:	地点、日期/Place, Date:
询价单号/Quotation-number:	客户、项目/Customer, Project:
驱动设备/Driven machine:	数量/Quantity:
防护等级/Degree of protection:	海拔/Altitude:
安装方式/Type of construct(IM):	环境温度/Ambient temperature:
冷却方式/Cooling type:	冷却水温/Cooling water temp.:
标准/Standard:	防爆等级/Explosion protection:
旋转方向/Direction of rotation:	热分级/Thermal class:
轴承/Bearings:	噪声限值（声功率级）/Max. noise (sound presure level):

直接起动时的主要数据 /Key data for direct on line

电压/Rated voltage:	额定功率/Rated power:
电压波动/Voltage fluctuations:	额定转速/Rated speed:
额定频率/Rated frequency:	起动方式/Starting method:
频率波动/Frequency fluct:	效率/Efficiency:

如需起动计算，则需要填写以下内容：

If the run-up should be calculated, the following data are needed:

起动电压/Starting voltage:	需求功率/Required power:
起动电流/Starting current:	外部转动惯量/Ext. mom. of inertia: kgm²

变频驱动时的主要数据 /Key data for converter operation:

变频器型号/Converter type:	额定功率/Rated power:
额定电压/Rated voltage:	功率因数/Power factor:

其他备注/Other comments:

备注： Remarks

.....

.....

.....

.....

.....

.....

.....

.....

.....

.....

.....

.....

.....

.....

.....

.....

.....

.....

.....

.....

.....

.....

.....

.....

.....

.....

.....

.....

备注：
Remarks

A series of horizontal dotted lines for writing remarks.

技术支持与服务热线：

电 话：+86 022 2390 1999

E-mail: ldacs.m.cn@siemens.com

西门子（中国）有限公司

地 址：中国北京市朝阳区望京中环南路 7 号

电 话：400-616-2020

邮 编：100102

订货号：E20001-A0648-C600-V6-5D00

726-SH902951-06173

西门子（中国）有限公司
如有改动，恕不事先通知